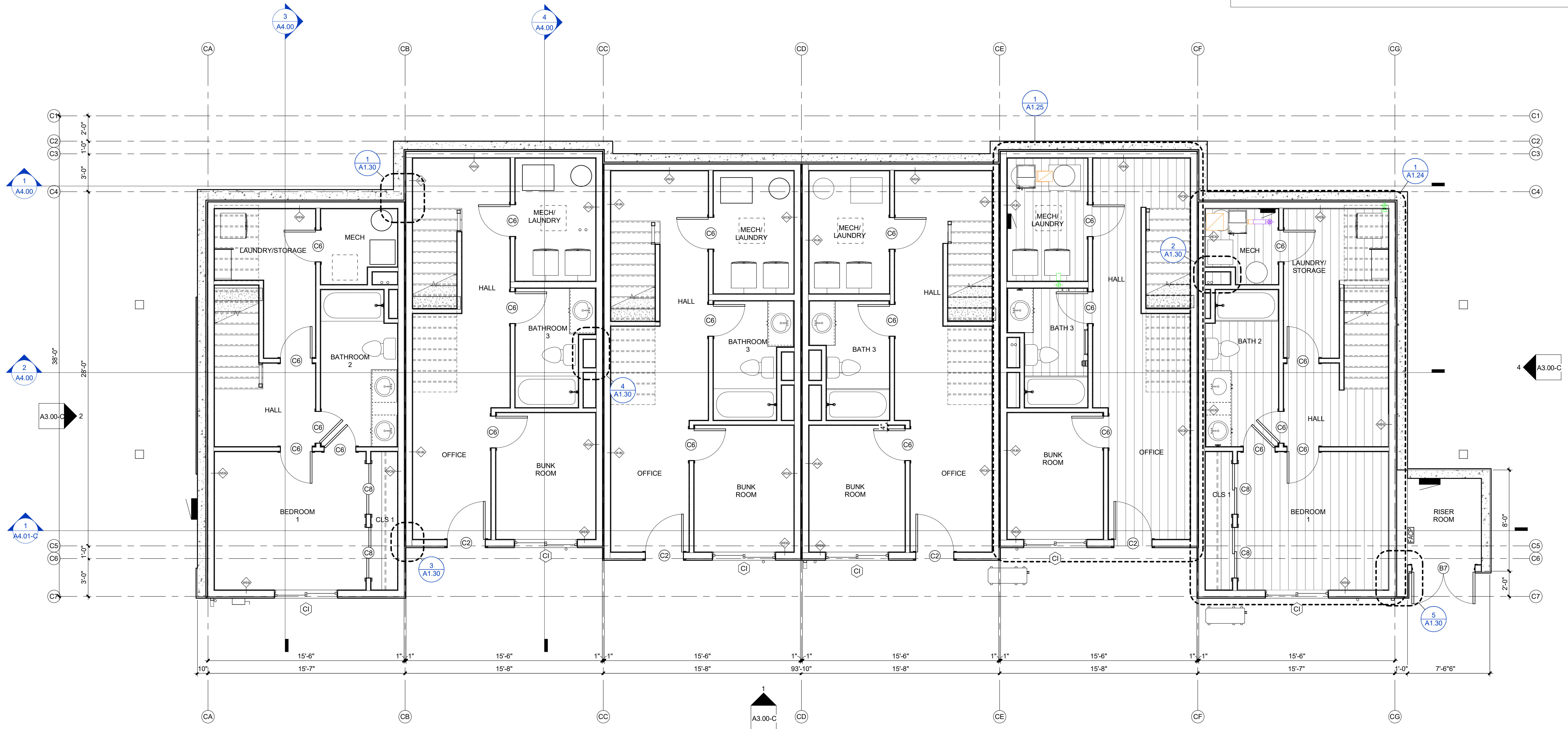
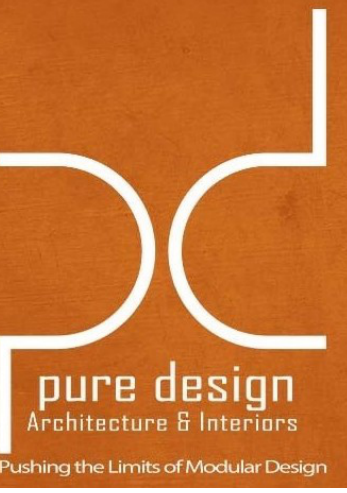
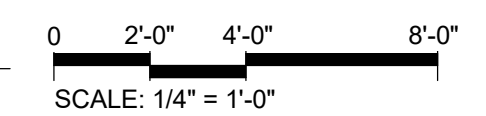


**CONSTRUCTION GENERAL NOTES**

1. PROVIDE TERMITE CONTROL UNDER NEW FLOOR SLABS.
2. ALL STRUCTURAL STEEL TO BE FACTORY PRIMED GRAY.
3. ALL CMU CORNERS ARE TO BE CONSTRUCTED OF BULLNOSE BLOCK.
4. ALL SWITCHES, RECEPTACLES, PHONE/DATA, AND CONTROLS ARE TO BE GRAY COLOR WITH STAINLESS STEEL COVER PLATES, UNLESS NOTED OTHERWISE.
5. ALL NOTES AND ELEMENTS IN **ORANGE** ARE SITE BUILT/INSTALLED COMPONENTS
6. FRTW 4" EACH WAY @ PENETRATIONS AND MATE LINES.



**1 BUILDING C - LOWER LEVEL**  
1/4" = 1'-0"



1330 BURLINGTON STREET, SUITE 201  
NORTH KANSAS CITY,  
MISSOURI 64116  
816.715.1392



**TRIUMPH**



**GUERDON**

THIS DRAWING HAS BEEN PREPARED BY THE ARCHITECT OF RECORD OR UNDER HIS DIRECT SUPERVISION AS REPRESENTATIVE OF SERVICE AND IS INTENDED FOR USE ONLY ON THIS PROJECT. NO OTHER SPECIFICATIONS, NOTES, OR RECORDS, INCLUDING THE ORIGINAL LAYOUT, FORM, AMENDMENT, AND COMPOSITION OF SPACE AND NUMBER OF PARTS, CONSTITUTE THE ORIGINAL USE, OR DISCLOSURE OF THE INFORMATION CONTAINED HEREIN, WITHOUT THE WRITTEN CONSENT OF THE ARCHITECT IS EXPRESSLY PROHIBITED.

THE ARCHITECT DISCLAIMS RESPONSIBILITY FOR ANY EXISTING BUILDING STRUCTURE, SITE CONDITIONS, EXISTING CONSTRUCTION, OR ANY DOCUMENTS, ORDINANCES, OR REGULATIONS. THE ARCHITECT'S SERVICES ARE LIMITED TO THE DESIGN AND CONSTRUCTION OF THE PROJECT DESCRIBED IN THIS DRAWING. THE ARCHITECT'S SERVICES ARE LIMITED TO THE DESIGN AND CONSTRUCTION OF THE PROJECT DESCRIBED IN THIS DRAWING. THE ARCHITECT'S SERVICES ARE LIMITED TO THE DESIGN AND CONSTRUCTION OF THE PROJECT DESCRIBED IN THIS DRAWING. THE ARCHITECT'S SERVICES ARE LIMITED TO THE DESIGN AND CONSTRUCTION OF THE PROJECT DESCRIBED IN THIS DRAWING.

VERIFY ALL ACTUAL CONDITIONS AND DIMENSIONS PRIOR TO CONSTRUCTION. DIMENSIONS OF WORK CONSTRUCTION, VERIFICATION AND ACCEPTANCE OF ALL EXISTING CONDITIONS, APPLICATION OF A BENCHMARK, OR EQUIVALENT, TO BE USED FOR WORK, AND ASSUMPTION OF RESPONSIBILITY FOR SATISFACTORY INSTALLATION.

DIMENSIONS SHOWN ARE TO FACE OF STRUCTURAL MATERIAL UNLESS OTHERWISE NOTED. CALCULATE AND READ DIMENSIONS, DO NOT SCALE THESE DRAWINGS.

**MOUNTAIN VILLAGE LOT 644**  
**BUILDING C**  
**MOUNTAIN VILLAGE, CO**

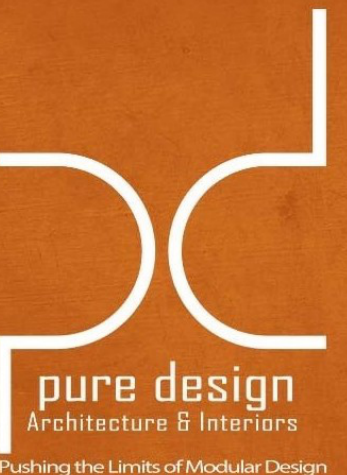
JOB NO:	23.002
DATE:	05.02.23
ISSUE RECORD:	NTA & DETAILS
REVISIONS:	

BUILDING C - LOWER LEVEL

**A1.10-C**

**CONSTRUCTION GENERAL NOTES**

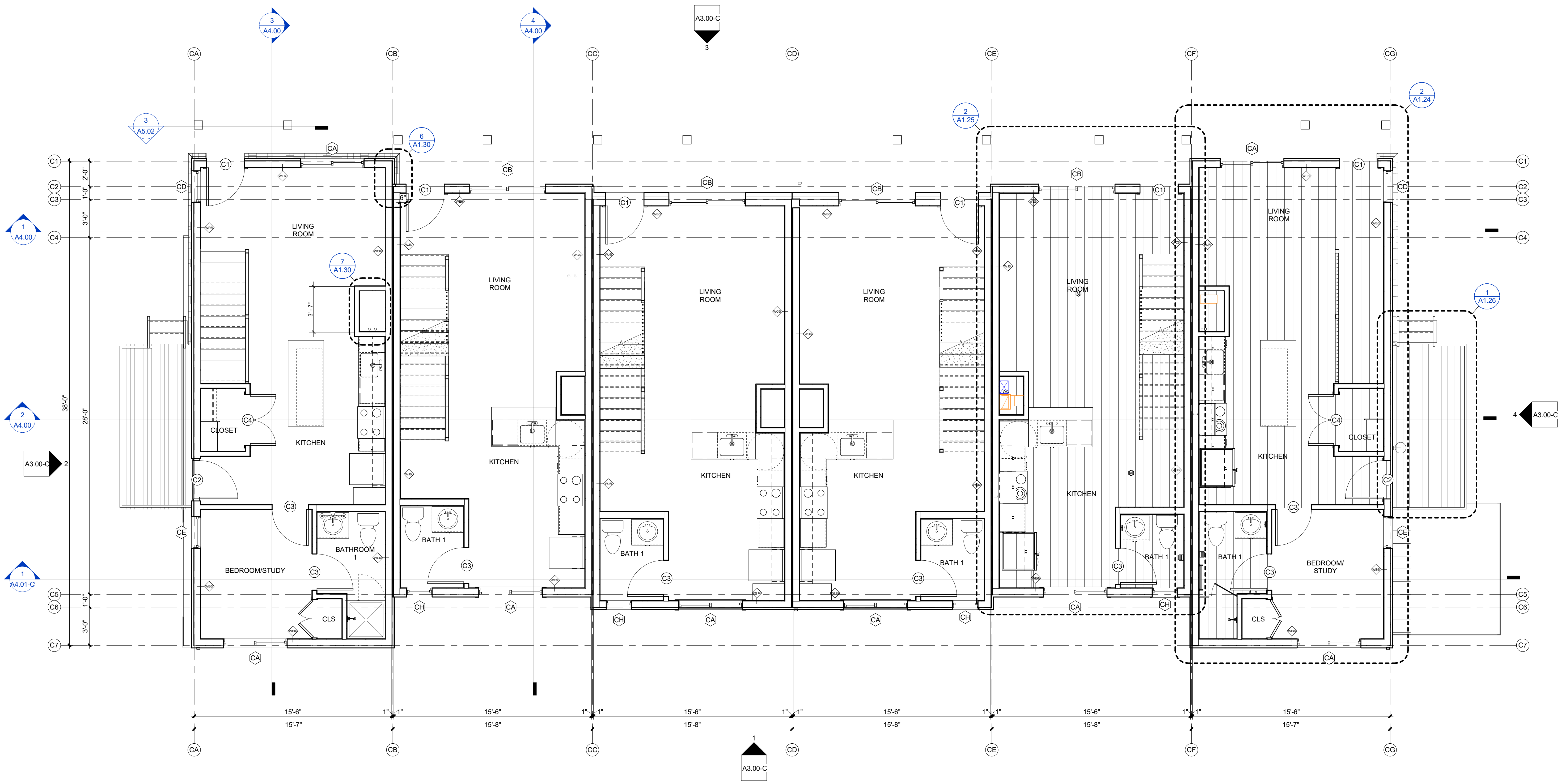
1. PROVIDE TERMITE CONTROL UNDER NEW FLOOR SLABS.
2. ALL STRUCTURAL STEEL TO BE FACTORY PRIMED GRAY.
3. ALL CMU CORNERS ARE TO BE CONSTRUCTED OF BULLNOSE BLOCK.
4. ALL SWITCHES, RECEPTACLES, PHONE/DATA, AND CONTROLS ARE TO BE GRAY COLOR WITH STAINLESS STEEL COVER PLATES, UNLESS NOTED OTHERWISE.
5. ALL NOTES AND ELEMENTS IN **ORANGE** ARE SITE BUILT/INSTALLED COMPONENTS
6. FRTW 4" EACH WAY @ PENETRATIONS AND MATE LINES.



1330 BURLINGTON STREET, SUITE 201  
NORTH KANSAS CITY,  
MISSOURI 64116  
816.715.1392



THIS DRAWING HAS BEEN PREPARED BY THE ARCHITECT OF RECORD OR UNDER HIS DIRECT SUPERVISION AND INTENDED FOR USE ONLY ON THIS PROJECT. ANY REVISIONS, SPECIFICATIONS, SCHEDULES, AND NOTATIONS ARE TO BE MADE BY THE ARCHITECT. THE ARCHITECT'S SERVICES ARE LIMITED TO THE DESIGN AND CONSTRUCTION OF THE BUILDING. THE ARCHITECT DOES NOT PROVIDE ENGINEERING, SURVEYING, OR OTHER PROFESSIONAL SERVICES. THE ARCHITECT'S LIABILITY IS LIMITED TO THE DESIGN AND CONSTRUCTION OF THE BUILDING. THE ARCHITECT DOES NOT PROVIDE ENGINEERING, SURVEYING, OR OTHER PROFESSIONAL SERVICES. THE ARCHITECT'S LIABILITY IS LIMITED TO THE DESIGN AND CONSTRUCTION OF THE BUILDING.



**1 BUILDING C - 1ST FLOOR**  
1/4" = 1'-0"

0 2'-0" 4'-0" 8'-0"  
SCALE: 1/4" = 1'-0"

**MOUNTAIN VILLAGE LOT 644**  
BUILDING C  
MOUNTAIN VILLAGE, CO

JOB NO: 23.002  
DATE: 05.02.23  
ISSUE RECORD: NTA & DETAILS

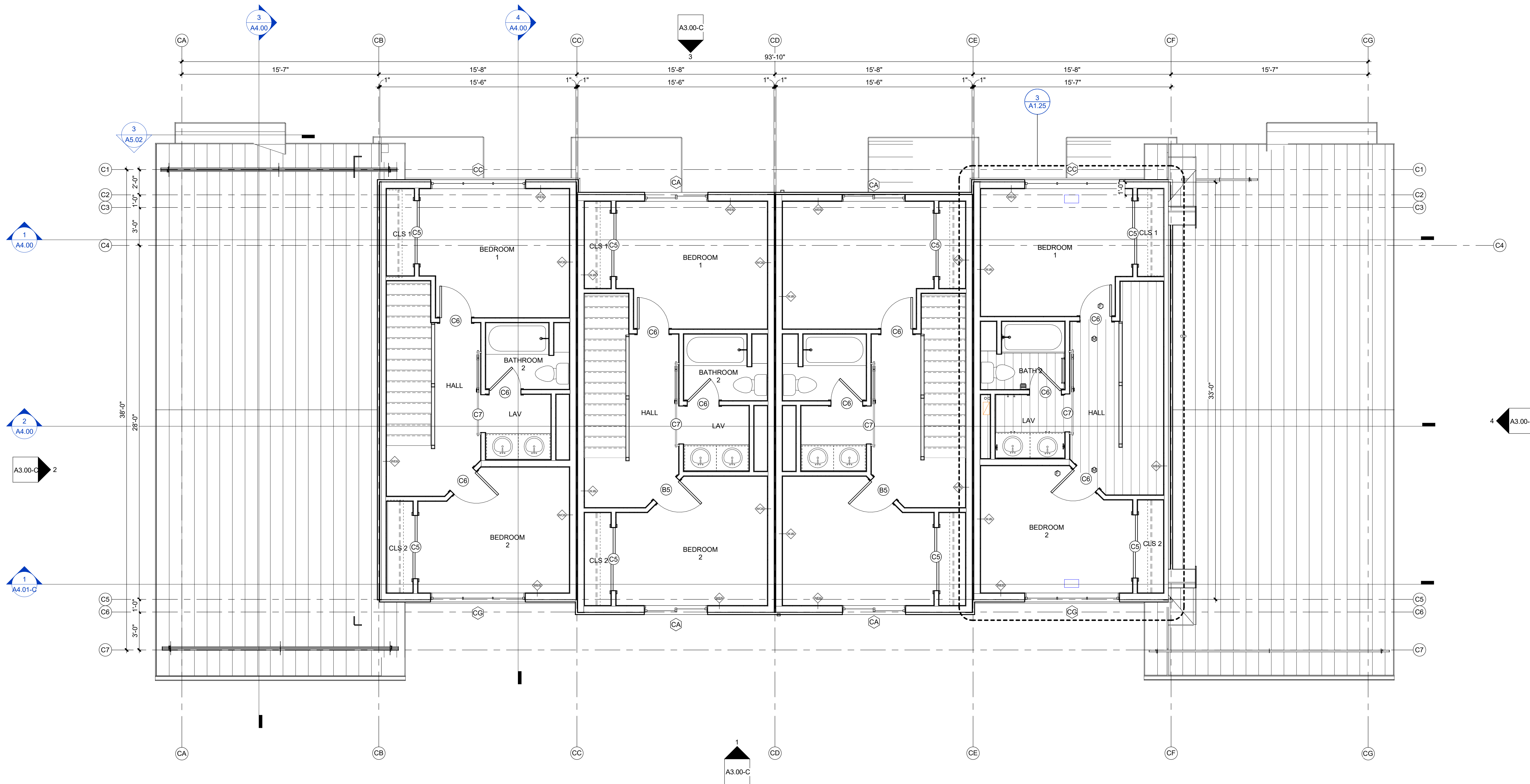
BUILDING C - FIRST FLOOR

**A1.11-C**

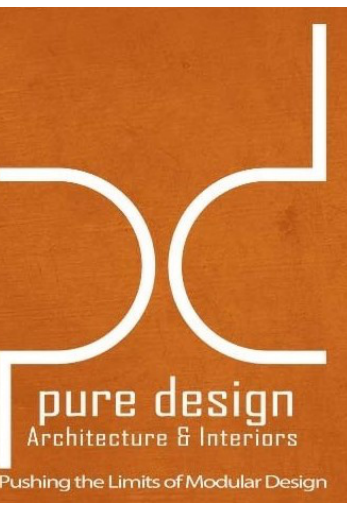
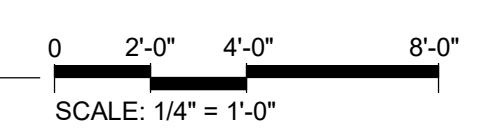


**CONSTRUCTION GENERAL NOTES**

1. PROVIDE TERMITE CONTROL UNDER NEW FLOOR SLABS.
2. ALL STRUCTURAL STEEL TO BE FACTORY PRIMED GRAY.
3. ALL CMU CORNERS ARE TO BE CONSTRUCTED OF BULLNOSE BLOCK.
4. ALL SWITCHES, RECEPTACLES, PHONE/DATA, AND CONTROLS ARE TO BE GRAY COLOR WITH STAINLESS STEEL COVER PLATES, UNLESS NOTED OTHERWISE.
5. ALL NOTES AND ELEMENTS IN **ORANGE** ARE SITE BUILT/INSTALLED COMPONENTS
6. FRTW 4" EACH WAY @ PENETRATIONS AND MATE LINES.



**1 BUILDING C - 2ND FLOOR**  
1/4" = 1'-0"



1330 BURLINGTON STREET, SUITE 201  
NORTH KANSAS CITY,  
MISSOURI 64116  
816.715.1392



THIS DRAWING HAS BEEN PREPARED BY THE ARCHITECT OR UNDER HIS DIRECT SUPERVISION AS AN INSTRUMENT OF SERVICE AND IS INTENDED FOR USE ONLY ON THIS PROJECT. ANY REUSE, REPRODUCTION, OR MODIFICATION OF THIS DRAWING WITHOUT THE WRITTEN CONSENT OF THE ARCHITECT IS STRICTLY PROHIBITED.

THE ARCHITECT DISCLAIMS RESPONSIBILITY FOR ANY EXISTING BUILDING STRUCTURE, SITE CONDITIONS, EXISTING CONSTRUCTION, OR ANY DOCUMENTS, ORDINANCES, OR CODES. THE ARCHITECT'S LIABILITY IS LIMITED TO THE PROFESSIONAL SERVICES PROVIDED BY THE ARCHITECT'S SEAL. THE ARCHITECT'S SERVICES ARE LIMITED TO THE DESIGN AND CONSTRUCTION OF THE PROJECT DESCRIBED HEREIN AND ARE NOT TO BE USED FOR ANY OTHER PROJECTS. THE ARCHITECT IS NOT RESPONSIBLE FOR ANY OTHER OBTAINING PERMITS OR REGULATIONS FOR THIS PROJECT.

VERIFY ALL ACTUAL CONDITIONS AND DIMENSIONS PRIOR TO CONSTRUCTION. COMMENCEMENT OF WORK CONSTITUTES VERIFICATION AND ACCEPTANCE OF ALL EXISTING CONDITIONS. APPLICATION OF MATERIALS OR EQUIPMENT NOT TO BE SHOWN OR SPECIFIED CONSTITUTES ACCEPTANCE OF THAT WORK, AND ASSUMPTION OF RESPONSIBILITY FOR SATISFACTORY INSTALLATION.

DIMENSIONS SHOWN ARE TO FACE OF STRUCTURAL MATERIAL UNLESS OTHERWISE NOTED. CALCULATE AND READ DIMENSIONS, DO NOT SCALE THESE DRAWINGS.

**MOUNTAIN VILLAGE LOT 644**  
**BUILDING C**  
**MOUNTAIN VILLAGE, CO**

JOB NO: 23.002  
DATE: 05.02.23  
ISSUE RECORD: NTA & DETAILS  
REVISIONS:

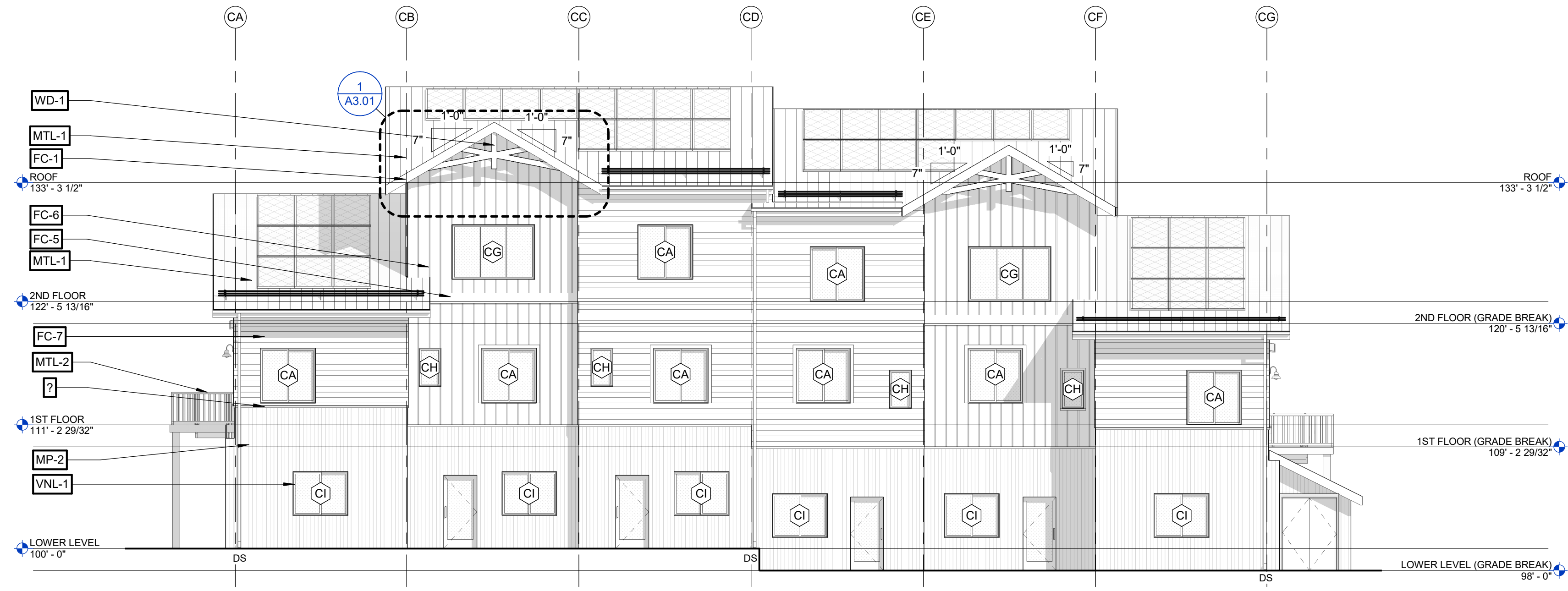
BUILDING C - SECOND FLOOR

**A1.12-C**

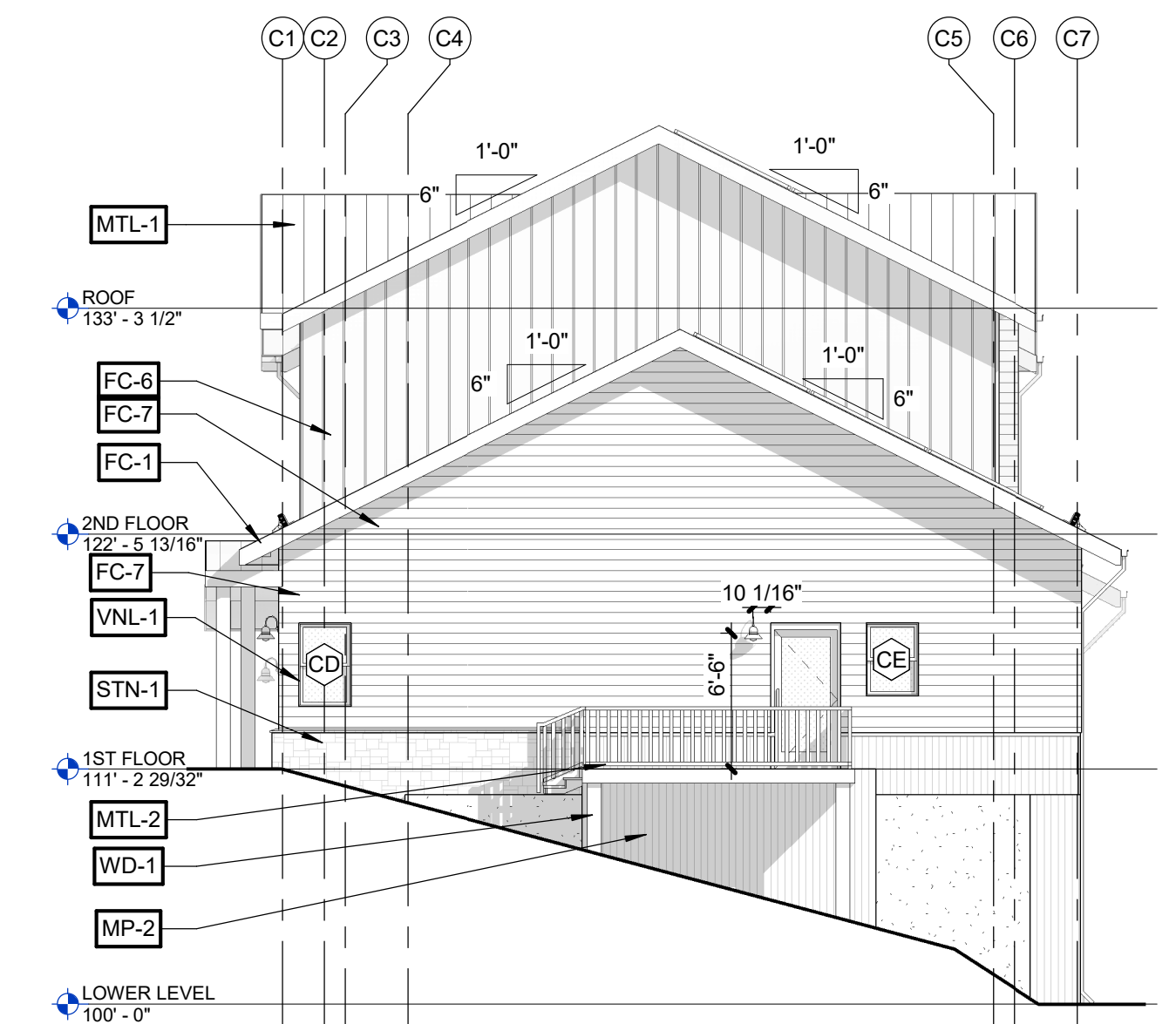


GENERAL MATERIAL NOTES		
ITEM	MATERIAL	COLOR
ROOF CAP	VENTED - METAL ROOF CAP	BRONZE
GUTTER	METAL GUTTER	BRONZE
DRIP EDGE	ALUMINUM (PREFINISHED)	MATCH ADJACENT ROOF
DOORS AND WINDOW TRIM	FIBER CEMENT - 1/4 SMOOTH 3.5" RAILS 4/4 SMOOTH 5.5" HEAD AND SILL	MATCH FIELD
SIDING TRIM	FIBER CEMENT - 5/4 SMOOTH 5.5"	MATCH FIELD
INSIDE CORNER TRIM	FIBER CEMENT - 5/4 SMOOTH 3.5"	MATCH FIELD
OUTSIDE CORNER TRIM	FIBER CEMENT - 5/4 SMOOTH 5.5"	MATCH FIELD
FRIEZE TRIM	FIBER CEMENT - 5/4 SMOOTH 5.5"	MATCH FIELD

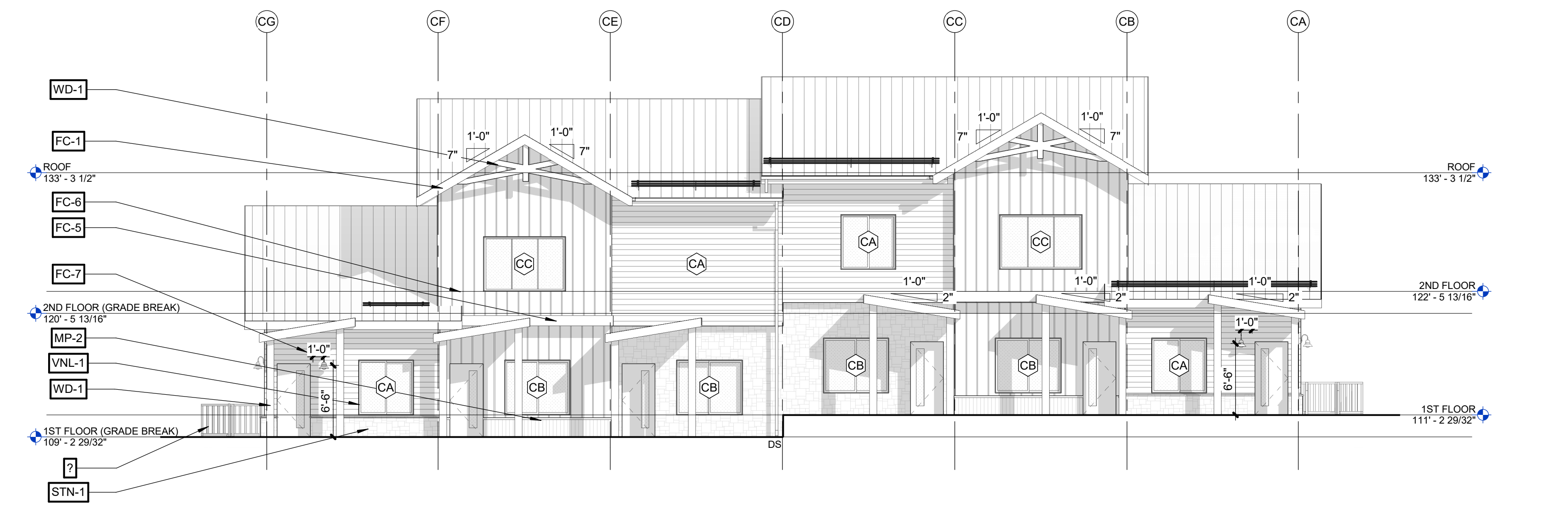
EXTERIOR MATERIAL SCHEDULE - BUILDING C/D				
WT	DESCRIPTION	MANUFACTURER	COLOR	COMMENTS
FC-1	FASCIA	FIBER CEMENT BOARD - 5/4 RUSTIC X 9.25"	IRON ORE - SW 7069	
FC-5	BELLY BAND	FIBER CEMENT BOARD - 5/4 SMOOTH 9.25"	SW - FRENCH ROAST	
FC-6	BOARD AND BATTEN	FIBER CEMENT VERTICAL SIDING	BLDG C - SEALSKIN - SW 7675 BLDG D - ARTISAN TAN - SW 7540	
FC-7	LAP SIDING	FIEER CEMENT LAP SIDING	BLDG C - ARTISAN TAN - SW 7540 BLDG D - SEALSKIN - SW 7675	
MP-2	METAL PANEL	REYNOBOND ALUMINUM COMPOSITE METAL PANEL	BLDG C - MEDIUM BROWN BLDG D - DARK BRONZE	
MTL-1	STANDING SEAM ROOF	SNAP-LOCK STANDING SEAM	BURNISHED SLATE	
MTL-2	METAL RAILING	STANDARD DESIGN - FORTRESS	POWDER COAT - BLACK	
STN-1	STONE	NATURAL STONE VENEER	GALLEGOS #303 NORTHSTAR	
WD-1	WOOD TIMBER	TREATED CEDAR POST	LIFETIME STAIN	



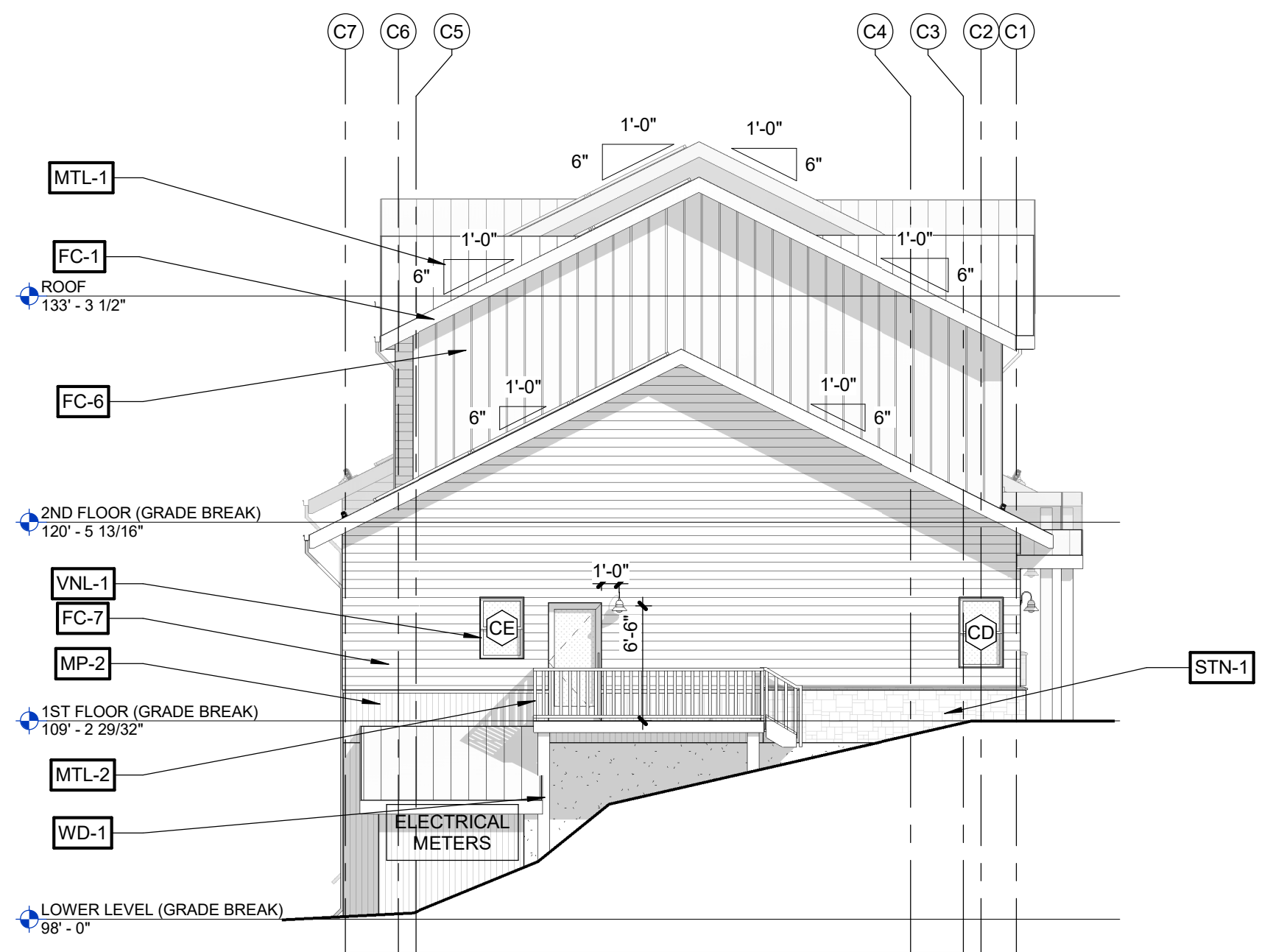
**1 BLDG C - SOUTH ELEVATION**  
1/8" = 1'-0"



**2 BLDG C - WEST ELEVATION**  
1/8" = 1'-0"



**3 BLDG C - NORTH ELEVATION**  
1/8" = 1'-0"



**4 BLDG C - EAST ELEVATION**  
1/8" = 1'-0"

**pure design**  
Architecture & Interiors  
Pushing the Limits of Modular Design

1330 BURLINGTON STREET, SUITE 201  
NORTH KANSAS CITY, MISSOURI 64116  
816.715.1392



**TRIUMPH**

2015 MOUNTAIN VILLAGE



**GUERDON**

THIS DRAWING HAS BEEN PREPARED BY THE ARCHITECT OR ARCHITECTS UNDER HIS DIRECT SUPERVISION AND AS REPRESENTATIVE OF SERVICE AND IS INTENDED FOR USE ONLY ON THIS PROJECT. ALL DIMENSIONS, SPECIFICATIONS, SCHEDULES AND NOTES, INCLUDING THE GENERAL LAYOUT, FORM, ARRANGEMENT AND COMPOSITION OF SPACE AND MATERIALS SHOWN, SHALL BE CONSIDERED THE DESIGN AND INTENT OF THE ARCHITECT. THE ARCHITECT'S SERVICES ARE LIMITED TO THE DESIGN OF THE PROJECT AND DO NOT INCLUDE THE USE OR DISCLOSURE OF THE INFORMATION CONTAINED HEREIN, WITHOUT THE WRITTEN CONSENT OF THE ARCHITECT OR ARCHITECTS.

THE ARCHITECT DISCLAIMS RESPONSIBILITY FOR ANY EXISTING BUILDING STRUCTURE, SITE CONDITIONS, EXISTING CONSTRUCTION, OR ANY OTHER DOCUMENTS OR RECORDS OF RECORD. THE ARCHITECT'S SERVICES ARE LIMITED TO THE DESIGN OF THE PROJECT AND DO NOT INCLUDE THE USE OR DISCLOSURE OF THE INFORMATION CONTAINED HEREIN, WITHOUT THE WRITTEN CONSENT OF THE ARCHITECT OR ARCHITECTS.

THE ARCHITECT'S LIABILITY IS LIMITED TO THE DESIGN OF THE PROJECT AND DOES NOT INCLUDE THE USE OR DISCLOSURE OF THE INFORMATION CONTAINED HEREIN, WITHOUT THE WRITTEN CONSENT OF THE ARCHITECT OR ARCHITECTS.

COMPLY WITH ALL LAWS, CODES, ORDINANCES AND REGULATIONS AND ALL APPLICABLE STANDARDS, SPECIFICATIONS AND NOTES OF THE PROJECT. THE ARCHITECT'S LIABILITY IS LIMITED TO THE DESIGN OF THE PROJECT AND DOES NOT INCLUDE THE USE OR DISCLOSURE OF THE INFORMATION CONTAINED HEREIN, WITHOUT THE WRITTEN CONSENT OF THE ARCHITECT OR ARCHITECTS.

VERIFY ALL ACTUAL CONDITIONS AND DIMENSIONS PRIOR TO CONSTRUCTION. DIMENSIONS OF WORK CONSTRUCTION SHALL BE VERIFIED AND ACCEPTED BY THE ARCHITECT PRIOR TO THE APPLICATION OF A FINISH. THE ARCHITECT'S LIABILITY IS LIMITED TO THE DESIGN OF THE PROJECT AND DOES NOT INCLUDE THE USE OR DISCLOSURE OF THE INFORMATION CONTAINED HEREIN, WITHOUT THE WRITTEN CONSENT OF THE ARCHITECT OR ARCHITECTS.

DIMENSIONS SHOWN ARE TO FACE OF STRUCTURAL MATERIAL UNLESS OTHERWISE NOTED. CALCULATE AND READ DIMENSIONS, DO NOT SCALE THESE DRAWINGS.

**MOUNTAIN VILLAGE LOT 644**

**BUILDING C**

**MOUNTAIN VILLAGE, CO**

JOB NO.	23.002
DATE	05.02.23
ISSUE RECORD	N/A & DETAILS
REVISIONS:	

BUILDING C/D - EXTERIOR ELEVATIONS

**A3.00-C**